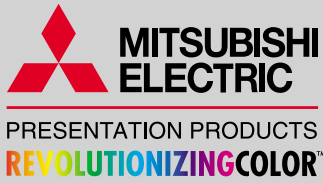


1100 ANSI LUMENS

6.4 POUNDS

XGA



# XL1XU

COLORVIEW  
PROJECTOR

## Extra Performance And Extra Lamp Life.

ColorView  
NATURAL COLOR MATRIX™

sRGB



The XL1XU from Mitsubishi Digital Electronics is an ultraportable LCD projector that offers 1100 ANSI lumens for exceptional brightness. The projector is equipped with many advanced features, including Mitsubishi's exclusive ColorView™ Natural Color Matrix and sRGB compliance.

- 1100 ANSI lumens for exceptional brightness
- Up to 2500 hours extra long lamp life
- Exclusive, award-winning ColorView Natural Color Matrix for rich, vivid colors
- sRGB color profile technology ensures standard, uniform color reproduction regardless of the type of display used
- Intelligent Room Illumination Sensor (IRIS®) senses room brightness and automatically adjusts the projector's contrast and image controls
- Native resolution of 1024 x 768 XGA, with 1280 x 1024 SXGA maximum (compressed)
- Dual lamp operations mode allows users to conserve lamp life, lower the operating temperature and noise level, extending the overall life of the projector
- Three year parts and labor warranty, 90-day warranty on the lamp, toll-free technical support, and a three-year Express Replacement Assistance (ERA) program that guarantees free replacement product shipped overnight for next business day delivery when and where available

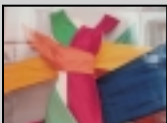




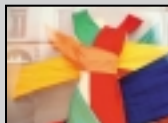
PRESENTATION PRODUCTS  
**REVOLUTIONIZINGCOLOR™**

**COLORVIEW™ NATURAL  
 COLOR MATRIX**

Mitsubishi's award-winning ColorView enables the XL1XU to produce vivid colors that precisely match their real-life counterparts, as well as giving you the ability to precisely adjust color saturation and control color tones.



Without ColorView



With ColorView

**PRECISE COLOR  
 REPRODUCTION  
 WITH sRGB**



Developed to ensure standard, uniform color reproduction regardless of the type of display used, sRGB color profile uses color coordinates common to all display technologies. As a result, it eliminates the hue variations that occur between different display systems and accurately matches the way colors look in real life.



Actual



sRGB



Non-sRGB

**IRIS® (INTELLIGENT  
 ROOM ILLUMINATION  
 SENSOR)**

Room illumination can have a significant effect on the quality and accuracy of color reproduction on-screen. The brighter the room, the duller the color. The XL1XU's built-in IRIS® automatically detects light volume and color density, automatically adjusting mid-range color tones as required for optimal color reproduction under any lighting conditions.

*A change in  
 external light  
 makes the room  
 brighter.*



Without IRIS



With IRIS

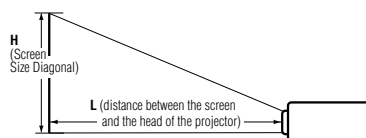
**XL1XU**  
 COLORVIEW PROJECTOR

**SPECIFICATIONS**

Display Technology	0.7" Polysilicon LCD panel x 3
Resolution	True XGA 1024 x 768 with compression for 1280 x 1024 SXGA max.
Brightness	1100 ANSI Lumens
Colors	16,770,000 colors
Zoom/Focus	Manual control (zoom ratio: 1.2 : 1)
Picture Size	30"~ 300" diagonal (100"=3.79 m)
Lamp*	Part Number VLT-XL2LP; Type:150 W HS-X lamp (2000 hour standard lamp life; 2500 hours max. in low mode)
Computer Compatibility	VGA - SXGA (640 x 400 ~ 1280 x 1024), True: 1024 x 768, Sync on green available
Video Compatibility	NTSC/NTSC 4.43/PAL (including PAL-M, N)/SECAM/PAL-60/DVD (component)/HDTV input ready (525p, 720p, 1080i)
Input Terminals	PC: mini D-sub 15 pin x 1, Video: RCA + S video x 1, PC/video audio: stereo RCA x 1
Output Terminals	RGB: mini D-sub 15 pin x 1
Communication Terminals	RS-232C x 1 (direct command is available, DIN 8 pin)
Audio Speaker	1 W Mono
Scanning Rates	Horizontal: 15 - 100 kHz Vertical: 50 - 120 Hz, Dot clock: 140 MHz
Operating Noise	34 dBA (low lamp mode)
Power Consumption	230 W
Dimensions (W x H x D)	9.3 x 3.7 x 12.4" (237 x 94 x 315 mm) (including feet)
Weight	6.4 lbs (2.9 kg)
Power Supply	AC100 ~ 240V±10%, 50/60 Hz
Safety Approvals	CSA, CSA NRT L/C, FCC Class B
Warranty	Three-year parts and labor; 90 days on lamp. XL1XU also includes three-year Emergency Roadside Assistance program that guarantees free replacement projector shipped overnight for next business day delivery when and where available
Accessories	Standard: 2 AC power cords, remote control, 2 batteries for remote, AV cable, RS-232C cable, PS/2 adapter, RGB cable, user manual, carrying case, quick reference card Optional: Spare lamp module (VLT-XL2LP), ceiling mount (XL1CM), soft roller case (XL1-SRCC), hard shell ATA case (XL1-ATAC), remote control (REMSL2), traveller 60" portable screen (SCRNTR60R)
Special Features	ColorView Natural Color Matrix; sRGB color compliance; IRIS control sensor; CineView™ Video Line-Doubler; digital keystone adjustment; manual zoom and focus lens

For more information on the XL1XU or any of Mitsubishi's other projectors or presentation products, contact Mitsubishi Digital Electronics today. Detailed technical specifications available upon request.

Screen (H) Screen Size (inches diag.)	Distance from screen (L) (Approximate)			
	Tele(Longest) (inches)	(meters)	Wide(Shortest) (inches)	(meters)
30	51.0	1.3	-	-
40	70.0	1.8	59.0	1.5
60	106.0	2.7	91.0	2.3
80	141.0	3.6	118.0	3.0
100	177.0	4.5	150.0	3.8
120	212.0	5.4	177.0	4.5
140	252.0	6.4	208.0	5.3
160	287.0	7.3	240.0	6.1
180	322.0	8.2	268.0	6.8
200	358.0	9.1	300.0	7.6
300	535.0	13.6	450.0	11.4



To find approximate distance between the projector and the screen, multiply the width of the screen x 2.2 (min.), and x 2.9 (max.).

Refer to the diagonal size chart for recommended distances.

©2003 Mitsubishi Digital Electronics America, Inc. Standard features, options and specifications subject to change without notice. Microsoft, Windows, and the Windows logo are registered trademarks of Microsoft Corporation. Mac and the Mac logo are trademarks of Apple Computer, Inc, registered in the U.S. and other countries. All other trademarks or registered trademarks are the property of their respective holders. \* The projector lamp contains mercury. Please dispose of properly.

Printed on 50% recycled paper including 20% post-consumer fibers, processed chlorine free. Printed with vegetable based inks.

Mitsubishi Digital Electronics America, Inc.  
 Presentation Products Division  
 9351 Jeronimo Road  
 Irvine, CA 92618  
 Toll Free: 888-307-0349  
 email: ppdinfo@mdea.com

Technical Support:  
 Toll Free: 888-307-0309  
 Email: tsupport@mdea.com

Canada:  
 Mitsubishi Electric Sales Canada Inc.  
 Information Technologies Group  
 Markham, Ontario  
 905-475-7728

www.mitsubishielectric.ca

www.mitsubishi-presentations.com