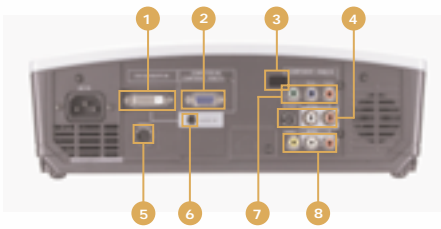
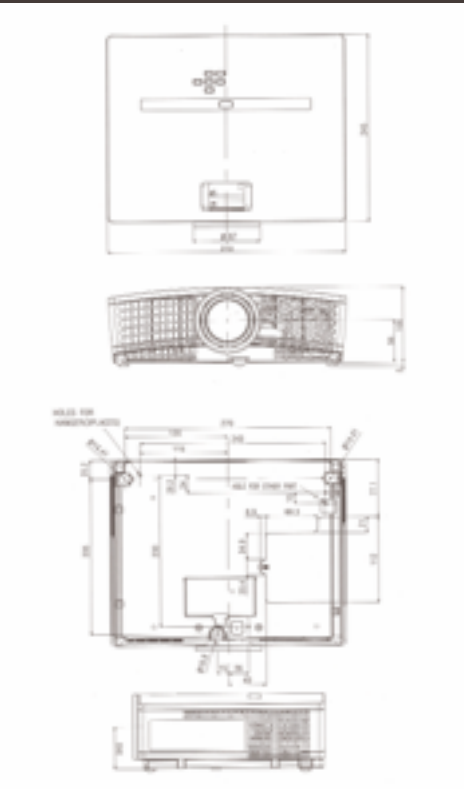


INPUT AND OUTPUT TERMINALS:



1. DVI-D (HDCP) INPUT
2. RGB IN
3. REMOTE IR
4. S-VIDEO INPUT
5. RS-232C
6. PC AUDIO INPUT
7. COMPONENT VIDEO IN
8. COMPOSITE VIDEO INPUT

DIMENSIONS: unit: mm, inch

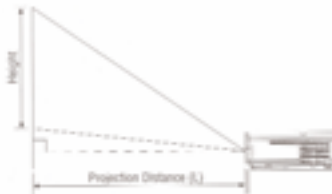


HC900 SPECIFICATIONS:

DISPLAY TECHNOLOGY	0.65" Wide, 1-Chip DMD, 12 deg. DDR, DDP2000
RESOLUTION	1024 x 576 (Total 589,824 pixels), 600 Video Lines
BRIGHTNESS	1500 Lumens (Peak) Min:980 lm
COLOR	16,770,000 colors, 7 seg. Color Wheel (R/G/B/W/R/G/B)
CONTRAST RATIO	2000 : 1 (on/off) When Closing Iris 4000 : 1 (on/off)
ZOOM/FOCUS	Manual Focus & Zoom Lens
PROJECTION LENS	F= 2.4 - 2.6 with Optical Iris 100" @3.6m (Wide)
OFF SET AXIS	3 : -1 up
PICTURE SIZE	40-275 (inch)
SOURCE LAMP	250W (Shut Off Time 2000 Hrs) with Low Mode (200 W : Shut Off Time 4000 Hrs)
PC COMPATIBILITY	Resolution: 640 x 480 - 1024 x 768 + Compressed 1152 x 870 Sync on Green available
VIDEO COMPATIBILITY	NTSC/NTSC 4.43/PAL (including PAL-M, N) /SECAM, PAL-60, DVD (Component) /HDTV (525p, 625p, 1080i (60Hz), 720p (50, 60Hz))
INPUT TERMINALS	RGB: Mini D-sub 15pin x 1 DVI-D (with HDCP) x 1 Audio: Stereo Mini Jack (ø 3.5mm) x 1 Video: RCA x 1 + S-VIDEO x 1 Component (Y, CB, CR) x 1 RCA (L, R) x 2
COMMUNICATION TERMINAL	RS-232C; 8pin x 1
SCANNING RATE	[H] 15 - 80 kHz [V] 50 - 85 Hz [Dot Clock] max 100 MHz
AUDIO SPEAKER	2 W Mono
HEIGHT ADJUSTER	One Push Rear Leg (-1 to 7 degree variable)
OUTSTANDING FEATURE	<ul style="list-style-type: none"> • sRGB specification mode • Digital keystone-correction for Vertical (without auto) • Video Line Doubler (DDP2000) ; 3:2 pull-down • 10 Languages OSD • CinemaFocus™ Aperture Adjustment • CineRichColor™ White Enhancement
HAND REMOTE UNIT (SYSTEM OPERATION REMOTE*)	(1) Projector Fully Control (2) DVD, VCR control (learning type) (3) Back light key
POWER CONSUMPTION	340 W /3.5 A
DIMENSION (W*H*D*)	310 (W)* 100 (H)* 245 (D)* mm (exclude height adjuster)
WEIGHT	2.9 kg (6.5 lbs) T.B.D
POWER REQUIREMENTS	AC 100 - 120V/ 220 - 240V /±10%, 50/60 Hz
FAN NOISE	35 dBA (Low Mode 30 dBA), sea-level
PACKAGE DIMENTION (W*H*D*)	420 (W)* 264 (H)* 360 (D)* mm
PACKAGE WEIGHT	6.2 kg (13.7 lbs)
SUPPLIED ASSESSORIES	AC Power Cable: 2.9m (USA type x 1 / EUR continetal type x 1) AV cable 2.9m (3 wires) RGB cable: 1.8m S-VIDEO cable: 2.9m RS-232C cable: 1.8m Remote Unit (incl. Battery) Quick Start Card User Manual (HC900: Eng/Fre/Spa/Chi/Kor), (HC900E: Eng/Fre/Spa/Ger/Rus/Ita/Por/Swe/NL)
OPTIONAL ACCESSORIES	Spare Lamp bulb (VLT-HC900LP) Ceiling mount bracket

PROJECTION DISTANCE AT EACH SCREEN SIZE:

SCREEN		DISTANCE FROM SCREEN				HEIGHT PROJECTED IMAGE (H)							
Diagonal Size		Width		Height		Max.Zoom		Min.Zoom		inch		m	
inch	cm	inch	cm	inch	cm	inch	m	inch	m	inch	m	inch	m
40	102	32	81	24	61	51	1.3	62	1.6	-2.8	-7.2		
60	152	48	122	36	91	77	2.0	94	2.4	-4.3	-10.9		
80	203	64	163	48	122	103	2.6	125	3.2	-5.7	-14.5		
100	254	80	203	60	152	130	3.3	157	4.0	-7.1	-18.1		
150	381	120	305	90	229	196	5.0	237	6.0	-10.7	-27.1		
200	508	160	406	120	305	262	6.6	316	8.0	-14.2	-36.2		
250	635	200	508	150	381	327	8.3	-	-	-17.8	-45.2		
300	762	240	610	180	457	393	10.0	-	-	-21.4	-54.3		



905.475.7728
www.MitsubishiElectric.ca

© 2005 Mitsubishi Electric Sales Canada Inc.
PP20049-09/04-25M-LITHC900

HC900

ULTRAPORTABLE COLORVIEW™
HOME THEATER DLP™ PROJECTOR

FOCUSED ON ENTERTAINMENT

4000:1 Contrast Ratio ■

HDTV Input Compatible ■

1500 ANSI Lumens ■

A LIFESTYLE BOOST FOR THE SAVVY HOME ENTERTAINMENT ENTHUSIAST.

Mitsubishi's HC900 Home Theater DLP™ Projector offers consumers a new level of performance and value. The HC900's brightness and contrast make it versatile enough to use in a variety of rooms: living room, family room, or dedicated home cinema room. A 7-segment color wheel and Mitsubishi's own CineFocus™ and CineRichColor™ give you the controls to create the best possible color, focus, and contrast for various ambient light conditions or viewing application. With a compact and lightweight cabinet, the HC900 can easily be stored when not in use, place on a table or shelf, or ceiling/wall mounted using many available universal mounting brackets. When packaged with a powerful surround audio system, DVD player and screen, the HC900 can bring a stunning home cinema experience to any home for the same cost as a large-screen rear-projection television.

WHAT THE HC900 CAN DO FOR YOU:

- Turn watching a movie into a dynamic experience for friends and family.
- Turn watching a televised event into a social occasion.
- Full-immersion multi-user gaming.
- Home videos or digital slides shows let you re-live the event in larger-than-life scale.

ADVANTAGES OF HOME THEATER FRONT PROJECTORS:

- Projection screens only sit a few inches off the wall. It can truly be the television picture you hang on the wall, and using a retractable screen, the screen can disappear when not in use!
- By positioning the projector different distances to the viewing wall, you can realize screen sizes from 70 inches to 250 inches!
- The big screen doesn't require a big box. You can move the projector and screen to a different part of the house, or to a different house!

BRIGHTNESS AND CONTRAST: 1500 ANSI Lumens and 4000:1 contrast ratio—the brightness and contrast to be able to use in a living room or family room with limited light control.

VIVID COLOR: 7-segment color wheel and x 4 color wheel speed—richer, truer colors using red, green, blue, and dark green segments.



CineFocus™: This function allows the user to manually adjust the lens aperture. A larger aperture can be used for brighter rooms to get optimum sharpness and brightness. The smaller aperture can be used for darker rooms to get better color and highest contrast (up to 4000:1 ratio).

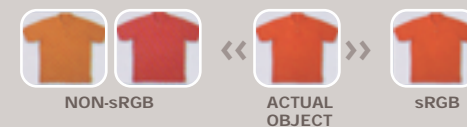
RICH CONNECTIVITY: DVI-D (HDCP, or high-bandwidth, digital copy protection) plus VGA, Component Video, S-Video and Composite Video Inputs.

CineRichColor™: This feature enables the user to adjust the picture to 10 different levels of white enhancement, or to select AUTO for factory adjusted settings based on input signals. As white is enhanced color range is compromised, so increased white enhancement can be used for PC, gaming or sports viewing use, and lower setting can be used for movies and TV material.



IMPRESSIVE PICTURE QUALITY

sRGB: Developed to ensure standard, uniform color reproduction regardless of the type of display used, sRGB color profile technology uses independent color coordinates common to all display technologies. As a result, it helps to eliminate hue variations that occur between different display systems and more accurately matches the way colors look in real life.



DLP™ TRUE VISION™ IMAGE PROCESSING:

- **Motion Adaptive De-Interlacing:** Offers optimal image de-interlacing for incredibly smooth motion video performance
- **Spatial Temporal Noise Reduction Filters:** Built-in filters practically eliminate image "noise" resulting in crystal-clear video.
- **Edge-Preserving De-Interlacing:** High performance video enhancement ensures that lines and edges are smooth regardless of their position on the screen.



©2004 Mitsubishi Digital Electronics America, Inc. Standard features, options and specifications subject to change without notice. Digital Light Processing, DLP, the DLP logo, and the DLP medallion are trademarks of Texas Instruments, Inc. All other trademarks or registered trademarks are the property of their respective holders. Cover photo courtesy of Draper, Inc.

* The projector lamp contains mercury. Please dispose of properly.

To find out more details about sRGB, visit us at:
www.MitsubishiElectric.ca

