

CENTRALIZED CONTROLLER AG-150A

WITH A NEW COLORED TOUCH PANEL, AND CONTINUATION OF ALL THE CURRENT G-50A FUNCTIONS, AG-150A VISUALIZES ITS FUNCTIONS FROM BASIC CONTROL TO **ADVANCED OPERATIONS** AND BRINGS AN ULTIMATE CONTROLLER TO REALITY.

BACKLIGHT COLOR LIQUID CRYSTAL

Backlight makes it easy to see and control units. One can identify whether a unit is ON or OFF from a distance. Control in the night with no lights is possible.

TOUCH PANEL

9-inch wide, high-resolution

Touch panel enables operation of units by touching with index finger. When object unit is touched, orange box appears around the unit icon indicating the unit selected.

FLAT BACK

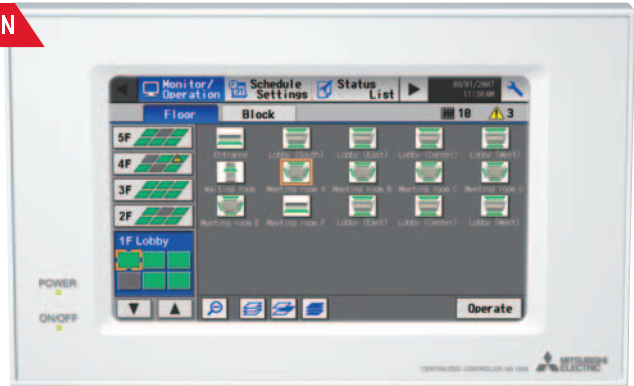
Easy installation

Allows for an installation of the unit either directly to the wall surface or using the installation hole in the wall.

USB MEMORY COMPATIBLE ³

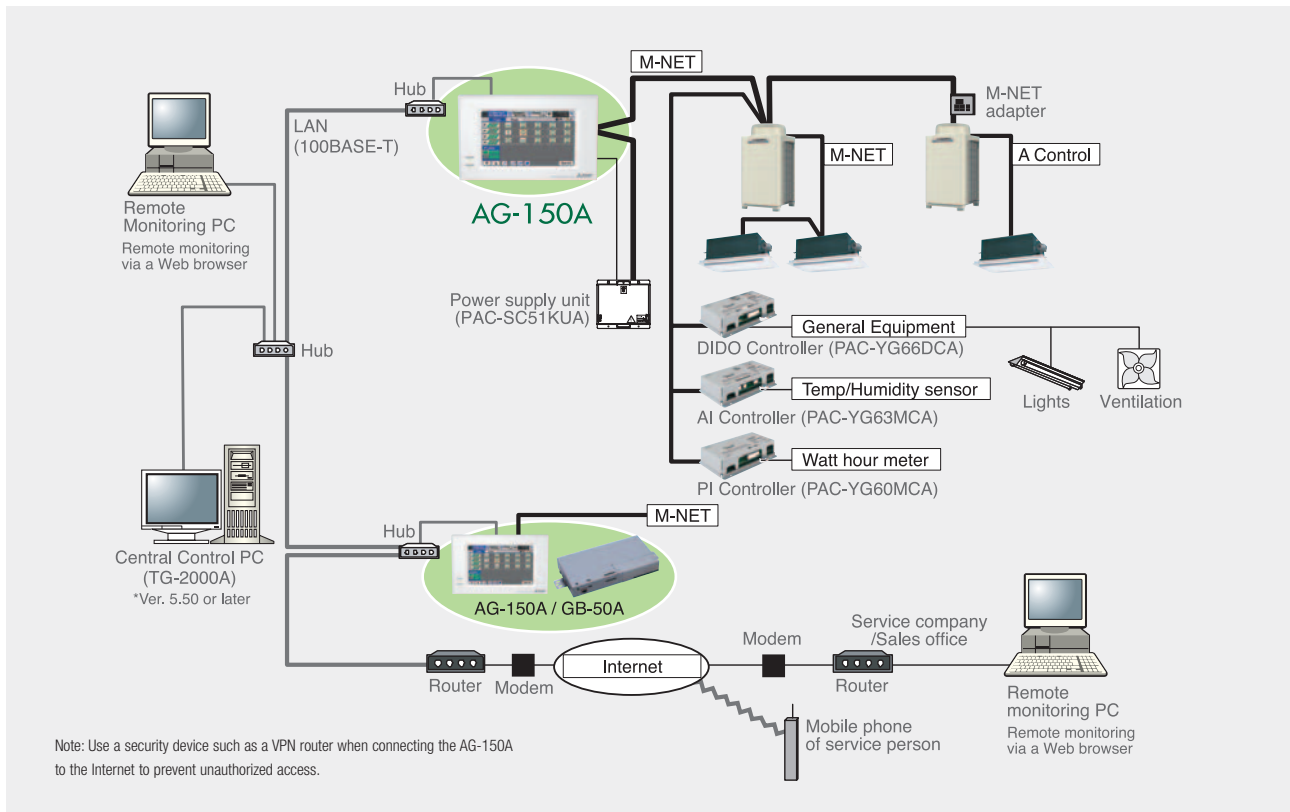
AVI measurement/initial setting CSV data extractable with USB memory. Can save and overwrite setting data.

NEW DESIGN



Option : Black surface cover
PAC-YG71CBL

SYSTEM STRUCTURE



CONTROLLABLE UNITS/GROUPS

Controls up to 50 units/groups (including indoor units ¹, LOSSNAY, DIDO ¹/AI/PI controller)
 Up to 150 units can be controlled via expansion controller ³



NEW MONITORING FUNCTIONS

Power consumption monitoring and recording (using PI controller with Web browser)
 Temperature/Humidity (using AI controller with Web browser)
 General equipment such as lights (using DIDO controller)

ENERGY-SAVING FUNCTIONS

Seasonal scheduling and automatic switch over ²
 Fan speed and airflow direction
 Yearly scheduling on LCD ²
 Optimized Start up control ^{2,3}
 Sliding temperature control ^{2,3}

¹ The maximum number of controllable units decreases depending on the indoor unit model or the number of equipment connected to DIDO controller.
² License registering is required.
³ From next version. Please contact your local sales representative for availability.

FUNCTIONS

○ : Each group ⊙ : Collective
 □ : Each unit × : Not available

Item	Description	Operations	Display
Controllable unit	Up to 50 units/groups.		
Dimension W × H × D	300 (11-13/16) × 185 (7-5/16) × 70.3 (2-13/16) [25.6] (1-1/16) mm (in) * [] indicates exposed depth after embedding.		
ON/OFF	Run and stop operation for the air conditioner units	○ ⊙	○ ⊙
Operation mode switching	Switches between Cool / Dry / Auto / Fan / Heat. (Group of LOSSNAY unit : automatic ventilation/ vent - heat interchange/ normal ventilation) depending on the air conditioner unit. Auto mode is for City Multi R2 and WR2 series only.	○ ⊙	○
Temperature setting	Cool/Dry : 19°C (66°F) - 30°C (86°F) [14°C (57°F) - 30°C (86°F)] Heat : 17°C (63°F) - 28°C (82°F) [17°C (63°F) - 28°C (82°F)] Auto : 19°C (66°F) - 28°C (82°F) [17°C (63°F) - 28°C (82°F)] [] When using middle-temperature on PDFY, PEFY-NMSU/NMHU-by setting DipSW7-1 to ON.	○ ⊙	○
Fan speed setting	Models with 4 air flow speed settings: Hi/Mid-2/Mid-1/Low Models with 3 air flow speed settings: Hi/Mid/Low Models with 2 air flow speed settings: Hi/Low Fan speed setting (including Auto) varies depending on the model.	○ ⊙	○
Air flow direction setting	Air flow direction angles, 4-angle or 5-angle Swing, Auto (Louver cannot be set)	○ ⊙	○
Schedule operation	Weekly schedule can be set by groups based on daily operation pattern.	○ ⊙	○
Permit / Prohibit local operation	Individually prohibit operation of each local remote control function (Start/Stop, Change operation mode, Set temperature, Reset filter).	○ ⊙	○
Indoor unit intake temperature	Measures the intake temperature of the indoor unit only when the indoor unit is operating.	×	○
Error	When an error is currently occurring on an air conditioner unit, the afflicted unit and the error code are displayed.	×	□ ⊙
Test run	This operates air conditioner units in test run mode.	○ ⊙	○
Ventilation interlock	The ventilation unit (LOSSNAY) is able to automatically start its operation when operation of the interlocked indoor unit starts.	○	○
External input/output	By using accessory cables you can set and monitor the following. Input : By level signal : "Batch start/stop", "Batch emergency stop" By pulse signal : "Batch start/stop", "Enable/disable local remote controller" Output : "Start/stop", "Error/Normal"	⊙	⊙

*NOTE: Operation and displayed content vary depending on the indoor unit model.