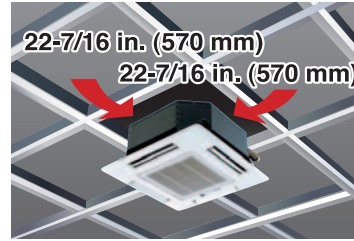




THE **NEW** 4-WAY CASSETTE NBMU OFFERS 72 DIFFERENT AIRFLOW PATTERNS, MAKING IT IDEAL FOR APPLICATIONS WITH CEILINGS UP TO 13-13/16 FT (4.2 m) IN HEIGHT.



Compact body to match with 2 feet (600 mm) x 2 feet (600 mm) ceiling design (NCMU)



AUTOMATIC AIR SPEED ADJUSTMENT

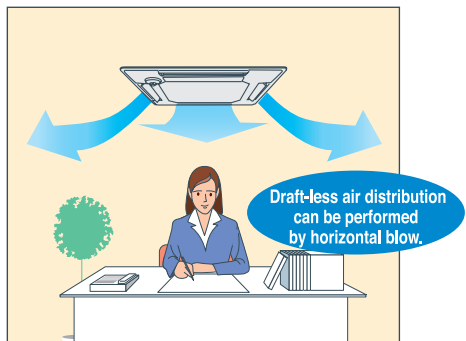
Auto-fan-speed mode enables speedy and comfortable heating during heating startup. The Auto-fan-speed mode is added to the usual four steps "Low, Mid1, Mid2, High." The Auto-fan-speed mode enables speedy and comfortable air conditioning because the air flow speeds up when starting, and air flow slows down when the air conditioning becomes stable. (PLFY-P NBMU-E ONLY)



* When using a wireless remote controller, initial settings are required.

DRAFT-LESS AIR DISTRIBUTION

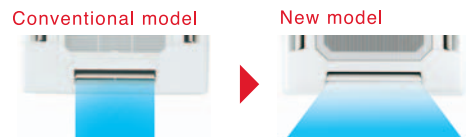
The newly employed horizontal blow mode* supplies airflow horizontally, not bringing cooled/warmed air directly to occupants, thus preventing discomfort sensation due to excessive cooling or direct exposing of occupants to the air blow. (PLFY-P NBMU-E ONLY)



* Default
* The ceiling may be smudged at a spot where the supplied airflow is seriously distributed.

WIDE AIR FLOW

Cooling softly with Wide Air Flow. Discharge air reaches wider area and the fan speed is decreased by 20% thanks to the new wide shape air outlet.

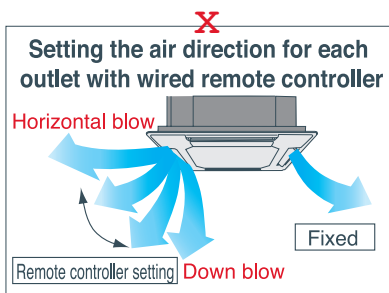
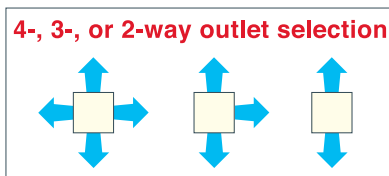


72 patterns of airflow to accommodate any room layout are available.

INDUSTRY FIRST

*On the commercial air conditioners (according to the survey by Mitsubishi Electric)

The number of outlets can be set to 4, 3, or 2. Flexible airflow is available by fixing the up-down airflow direction of the outlet with a wired remote controller (or manually).



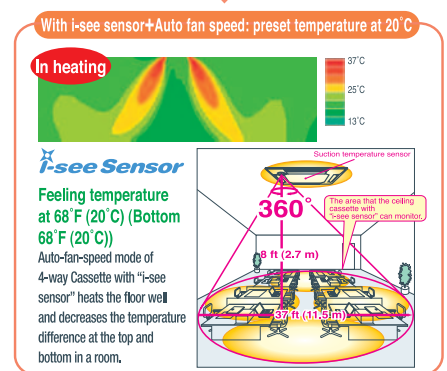
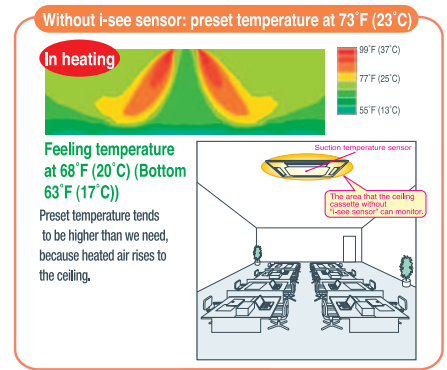
72 airflow patterns

i-see Sensor

"i-see sensor" can be used with ceiling cassette type 4-way airflow unit. (Option PAC-SA1ME-E, PLFY-NBMU only)

New 4-way Cassette PLFY-NBMU controls the temperature difference at the top and bottom in a room by checking the floor temperature with "i-see sensor". Comfortable air conditioning can be realized smoothly with "sensible temperature control." (Option PAC-SA1ME-E, PLFY-NBMU only)

Prevents overcooling/overheating, and improves comfort/energy efficiency.



SPECIFICATIONS

Model		PLFY-P12NBMU-E	PLFY-P15NBMU-E	PLFY-P18NBMU-E	PLFY-P24NBMU-E	PLFY-P30NBMU-E	PLFY-P36NBMU-E
Power source		1-phase 208-230V 60Hz					
Cooling capacity (Nominal)	#1	BTU / h	12,000	15,000	18,000	24,000	30,000
	#1	kW	3.5	4.4	5.3	7.0	8.8
		Power input kW	0.03	0.04	0.05	0.06	0.07
		Current input A	0.22	0.29	0.36	0.43	0.51
Heating capacity (Nominal)	#1	BTU / h	13,500	17,000	20,000	27,000	34,000
	#1	kW	4.0	5.0	5.9	7.9	10.0
		Power input kW	0.02	0.03	0.04	0.05	0.06
		Current input A	0.14	0.22	0.29	0.36	0.43
External finish		Galvanized steel sheet					
External dimension		10-3/16 x 33-3/32 x 33-3/32					
H x W x D		mm 258 x 840 x 840					
Net weight		lbs (kg) 49 (22)					
Model		PLP-40BAU					
External finish		MUNSELL (6.4Y 8.9/0.4)					
Dimension		1-3/8 x 37-13/32 x 37-13/32					
H x W x D		mm 35 x 950 x 950					
Net Weight		lbs (kg) 13 (6)					
Heat exchanger		Cross fin					
Type x Quantity		Turbo fan x 1					
in. WG		0.000 (208V)					
Pa		0					
External static pressure		in. WG 0.000 (230V)					
Pa		0					
Motor type		DC motor					
Motor output		kW 0.050					
Driving mechanism		Direct-driven					
Airflow rate #2		cfm 388 - 424 - 459 - 494					
m³ / min		11.0 - 12.0 - 13.0 - 14.0					
L / s		183 - 200 - 217 - 233					
Sound pressure level (Low-Mid2-Mid1-High)		dB <A> 27 - 28 - 29 - 31 (208-230V)					
dB <A>		-					
dB <A>		-					
Air filter		PP honeycomb (long life filter, anti-bacterial type)					
Diameter of refrigerant pipe (O.D.)		Liquid (R410A) in. (mm) ø1/4 (ø6.35) Flare					
Gas (R410A) in. (mm)		ø1/4 (ø6.35) Flare					
in. (mm)		ø1/2 (ø12.7) Flare					
in. (mm)		ø1/2 (ø12.7) Flare					
Field drain pipe diameter		in. (mm) O.D. 1-1/4 (32)					

Model		PLFY-P08NCMU-E	PLFY-P12NCMU-E	PLFY-P15NCMU-E
Power source		1-phase 208-230 V 60Hz		
Cooling capacity (Nominal)	#1	BTU / h	8,000	12,000
	#1	kW	2.3	3.5
		Power input kW	0.05	0.06
		Current input A	0.23	0.28
Heating capacity (Nominal)	#1	BTU / h	9,000	13,500
	#1	kW	2.6	4
		Power input kW	0.05	0.06
		Current input A	0.23	0.28
External finish		-		
External dimension		8-3/16 x 22-7/16 x 22-7/16		
H x W x D		mm 208 x 570 x 570		
Net weight		lbs (kg) 34 (15.5)		
Model		SLP-15AAUW		
External finish		6.4Y 8.9/0.4		
Dimension		25/32 x 25-19/32 x 25-19/32		
H x W x D		mm 20 x 650 x 650		
Net Weight		lbs (kg) 7(3)		
Heat exchanger		Cross fin		
Type x Quantity		Turbo fan x 1		
in. WG		0.000 (208V)		
Pa		0		
External static pressure		in. WG 0.000 (230V)		
Pa		0		
Motor type		1-phase induction motor		
Motor output		kW 0.015		
Driving mechanism		Direct-driven		
Airflow rate #2		cfm 280-320-350		
m³ / min		8.0-9.0-10.0		
L / s		133-150-167		
Sound pressure level (Low-Mid-High)		dB <A> 29-32-38 (208-230V)		
dB <A>		-		
dB <A>		-		
Air filter		PP honey comb fabric		
Diameter of refrigerant pipe (O.D.)		Liquid (R410A) in. (mm) ø1/4 (ø6.35) Flare		
Gas (R410A) in. (mm)		ø1/4 (ø6.35) Flare		
in. (mm)		ø1/2 (ø12.7) Flare		
in. (mm)		ø1/2 (ø12.7) Flare		
Field drain pipe diameter		in. (mm) O.D. 1-1/4 (32)		

OPTIONAL PARTS

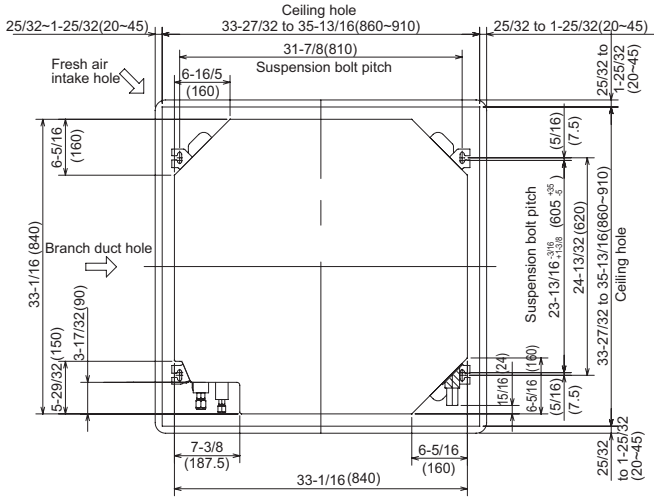
Description	Model	Applicable capacity	
		NBMU	NCMU
Decoration panel	SLP-15AAUW	-	P08, P12, P15
Multi-function casement	PLP-40BAU	P12, P15, P18, P24, P30, P36	-
High-efficiency filter element	PAC-SH53TM-E	P12, P15, P18, P24, P30, P36	-
Air outlet shutter plate (1 set)	PAC-SH51SP-E	P12, P15, P18, P24, P30, P36	-
Flange for fresh air intake	PAC-SH650F-E	P12, P15, P18, P24, P30, P36	-
Wireless signal receiver	PAC-SA9FA-E	P12, P15, P18, P24, P30, P36	-
"I-see" sensor corner panel	PAC-SA1ME-E	P12, P15, P18, P24, P30, P36	-
External heater adaptor	PAC-YU24HT-F	P12, P15, P18, P24, P30, P36	P08, P12, P15

*1 Cooling / Heating capacity indicates the maximum value at operation under the following condition. Heating: Indoor 70°F (21.1°C) D.B., Outdoor 47°F (8.3°C) D.B. / 43°F (6.1°C) W.B. Pipe length 25 ft. (7.6 m), Cooling: Indoor 80°F (26.7°C) D.B. / 67°F (19.4°C) W.B., Outdoor 95°F (35°C) D.B. Pipe length 25 ft. (7.6 m), Level difference 0 ft. (0 m)
 *2 Airflow rate / Sound pressure level are in (low-middle2-middle1-high) or (low-middle-high).
 *3 It is measured in anechoic room.

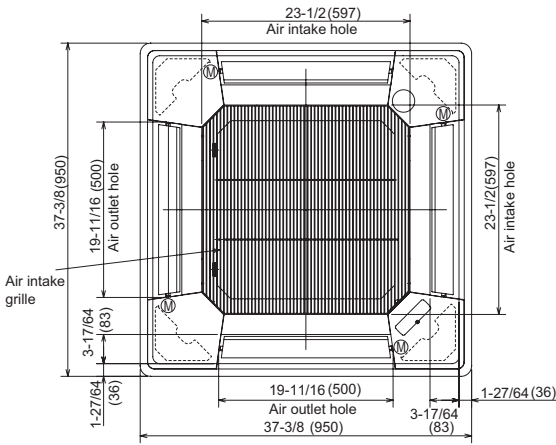
PLFY-P NBMU-E

PLFY-P12/15/18/24/30/36NBMU-E

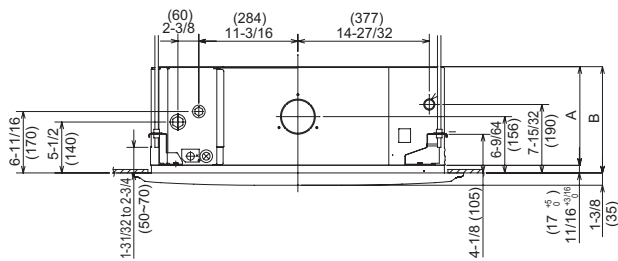
Upper view



Lower view



Side view

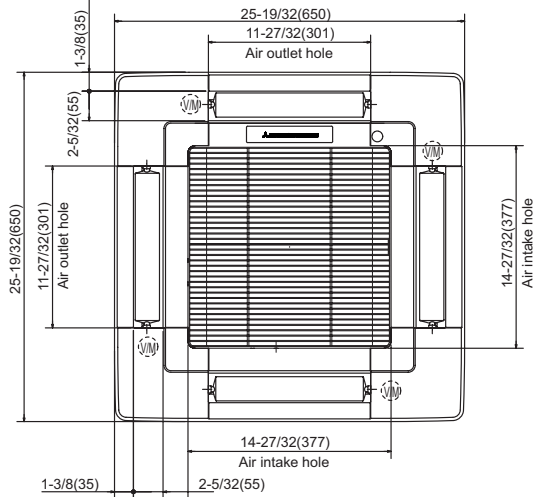


Models	A	B
PLFY-P12-15-18-24-30NBMU-E	9-1/2 (241)	10-3/16 (258)
PLFY-P36NBMU-E	11-1/16 (281)	11-3/4 (298)

PLFY-P NCMU-E

PLFY-P08/12/15NCMU-E

Lower view



Side view

