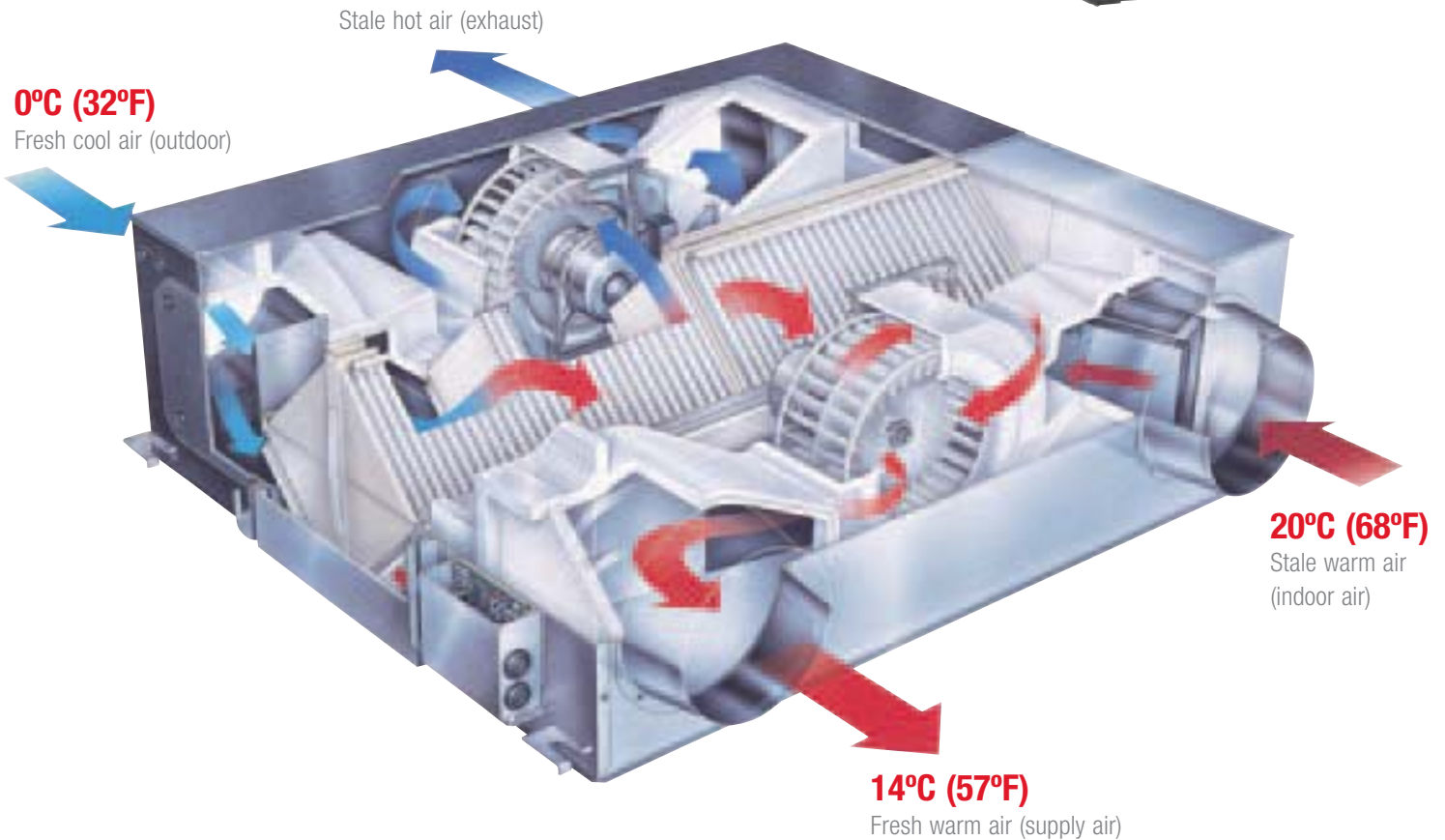




THE VENTILATION SYSTEM FOR ENHANCED AIR QUALITY - **LOSSNAY**

Combine with Lossnay Ventilation System to Enhance Air Quality.
Unified Control System Allows Greater Design Freedom.



LGH-F300RX₃-E (HIGH FAN SPEED)

LGH-F300RX₃-E

[300cfm Single phase 208-230V 60Hz]

LGH-F470RX₃-E

[470cfm Single phase 208-230V 60Hz]

LGH-F600RX₃-E

[600cfm Single phase 208-230V 60Hz]

LGH-F1200RX₃-E

[1200cfm Single phase 208-230V 60Hz]

HEAT-EXCHANGE EFFICIENCY OBTAINABLE ONLY WITH LOSSNAY.

The secret to the unmatched comfort provided by Lossnay core is the cross-flow, plate-fin structure of the heat-exchange unit. A diaphragm made of a specially processed paper fully separates inducted and exhausted air supplies, ensuring that only fresh air is introduced to the indoor environment.

The superior heat-transfer and moisture permeability of the special paper assure highly effective total heat exchange (temperature and humidity) when inducted and exhausted air supplies cross in the Lossnay core.

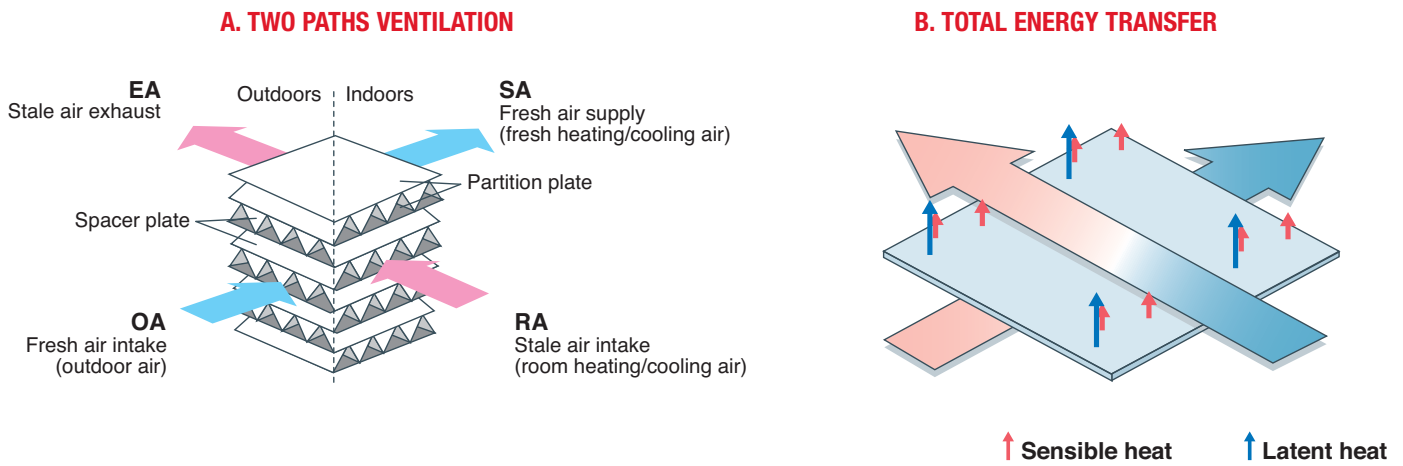
LOSSNAY TECHNOLOGY

- **TWO PATHS VENTILATION**

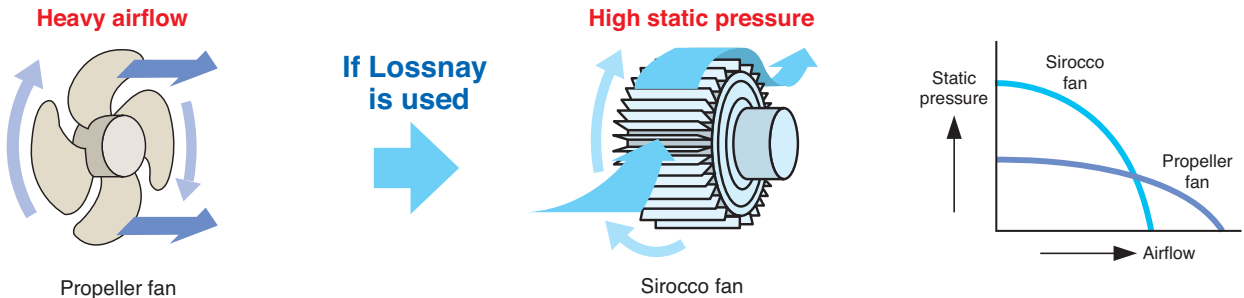
LOSSNAY simultaneously intakes Fresh Air and exhausts stale Air.

- **TOTAL ENERGY RECOVERY**

LOSSNAY transfers BOTH sensible heat and latent heat.



HIGH STATIC PRESSURE THAT FACILITATES DUCT DESIGN

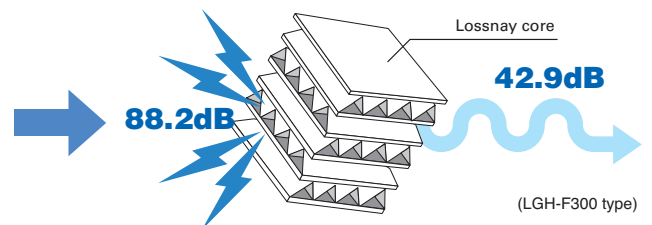


As propeller fans feature low static pressure, they have a low ability to suck air and cannot provide sufficient ventilation in well-sealed buildings (and are particularly unsuitable for elongated ducts or ducts in which system members are mounted).

As the sirocco fans used in Lossnay are capable of creating high static pressure and have a high ability to suck air, they provide sufficient ventilation even in well-sealed buildings (and are best suited to elongated ducts or ducts in which system members are mounted).

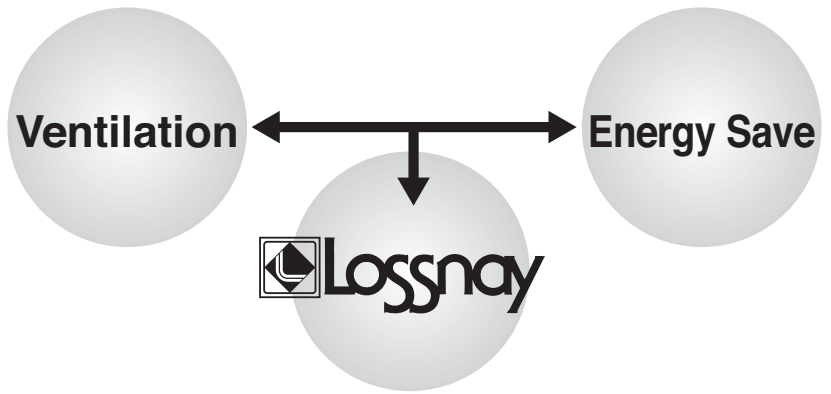
EXCELLENT SOUND INSULATION

The structure of the Lossnay core transmits little air vibration and absorbs sound. Lossnay is approved as noise control equipment for houses in noisy areas near airports, and is also used in areas near railroads and highways.



WHY LOSSNAY IS NECESSARY.

- **WITHOUT VENTILATION...**
Lack of Ventilation makes people sick by dirty indoor air including CO2, Dust, Bacteria.
- **IF JUST OPENING WINDOWS...**
Opening windows eliminates dirty air BUT wastes much air-con energy.
- **SO WE RECOMMEND LOSSNAY**
LOSSNAY is simultaneous pursuit of Ventilation and Energy Saving.

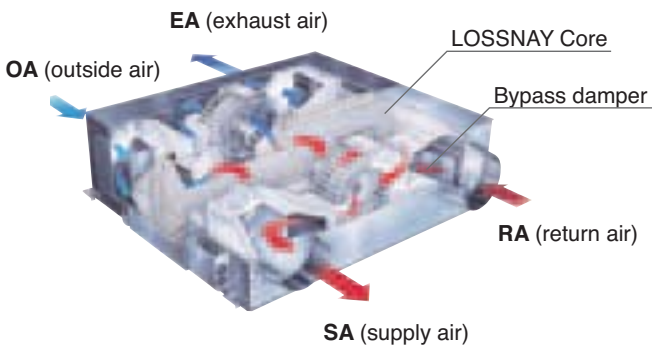


• **THIS IS LOSSNAY**

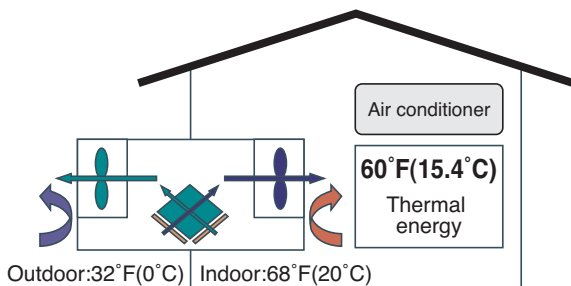
ADVANTAGES

- Clean air supply, dirty air exhaust** by Two air paths (OA → SA and RA → EA)
- Energy recovery** by LOSSNAY Core
- Free cooling** by bypass damper

UNIT STRUCTURE



ENERGY RECOVERY IMAGE



HOW MUCH RECOVERY?

OA temp.: 32°F (0°C) → SA temp.: 60°F (15.4°C)
(Indoor 68°F (20°C))

INSTALLATION

LOSSNAY ventilation combined with Air-con



EASY INSTALLATION • FLEXIBLE DUCT WORK IS AVAILABLE

STANDARD INSTALLATION	ALTERNATE INSTALLATION
<p>A space is necessary to prevent the influx of rainwater.</p> <p>EA ↓ ↑ OA</p>	<p>Can be installed close to the surface of the wall.</p> <p>EA ↓ ↑ OA</p>
<p>Collar Aperture Plate</p>	<p>Changing the duct direction</p> <p>Exchangeable</p>

MODEL LINEUP



LGH-F300RX3-E
LGH-F470RX3-E
LGH-F600RX3-E



LGH-F1200RX3-E

SPECIFICATIONS

Model		LGH-F300RX3-E					
Power source		Single phase 208-230V/60Hz					
Ventilation mode		Lossnay ventilation			Bypass ventilation		
Speed		Extra high	High	Low	Extra high	High	Low
Current (A)		1.23/1.3	1.0/1.1	0.56/0.6	1.28/1.4	1.02/1.1	0.57/0.6
Input (W)		253/278	207/266	116/146	254/280	207/262	116/146
Air volume	(CFM)	300/300	300/300	155/180	300/300	260/300	155/180
External static pressure	(in H ₂ O)	0.25/0.65	0.1/0.1	0.02/0.02	0.25/0.65	0.1/0.1	0.02/0.02
Temperature recovery efficiency (%)		69/69	70/69	77/76	—	—	—
Enthalpy recovery efficiency (%)	Heating	62/62	64/62	71/69	—	—	—
	Cooling	44/44	46/44	55/52	—	—	—
Sound pressure level (dB)	(Measured at 1.5m under the center of the unit)	33/36	30/32	24/25	33/36	30/32	24/25
Weight (lbs)		73					
Starting current		Under (2.5A) or less					

Model		LGH-F470RX3-E					
Power source		Single phase 208-230V/60Hz					
Ventilation mode		Lossnay ventilation			Bypass ventilation		
Speed		Extra high	High	Low	Extra high	High	Low
Current (A)		2.5/2.5	2.4/2.4	1.6/1.7	2.5/2.5	2.3/2.3	1.6/1.7
Input (W)		515/560	485/525	325/375	505/545	473/510	326/370
Air volume	(CFM)	470/470	470/470	330/380	470/470	470/470	330/380
External static pressure	(in H ₂ O)	0.80/0.96	0.58/0.78	0.29/0.51	0.80/0.96	0.58/0.78	0.29/0.51
Temperature recovery efficiency (%)		69/69	69/69	73/72	—	—	—
Enthalpy recovery efficiency (%)	Heating	62/62	62/62	66/65	—	—	—
	Cooling	44/44	44/44	50/48	—	—	—
Sound pressure level (dB)	(Measured at 1.5m under the center of the unit)	37/39	35.5/37	29.5/31.5	38.5/40.5	37/39	30.5/32.5
Weight (lbs)		143					
Starting current		Under (5.0A) or less					

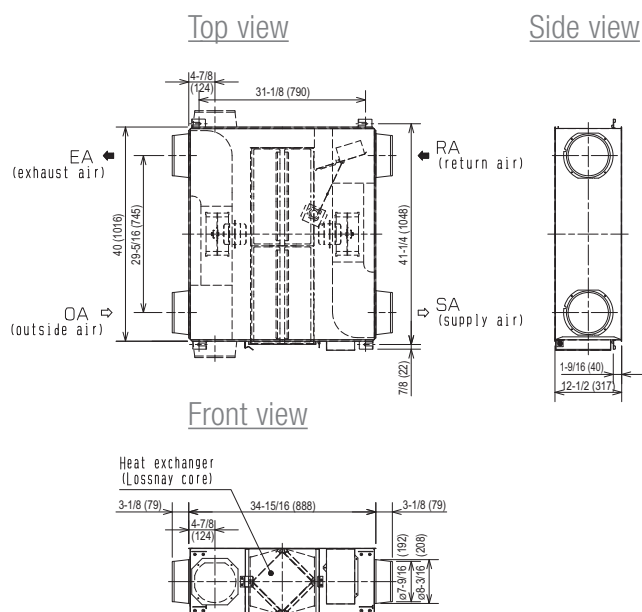
Model		LGH-F600RX3-E					
Power source		Single phase 208-230V/60Hz					
Ventilation mode		Lossnay ventilation			Bypass ventilation		
Speed		Extra high	High	Low	Extra high	High	Low
Current (A)		2.9/2.9	2.5/2.6	1.6/1.7	2.8/2.9	2.5/2.6	1.6/1.7
Input (W)		596/654	526/600	336/390	590/648	521/600	334/396
Air volume	(CFM)	600/600	520/600	370/430	600/600	520/600	370/430
External static pressure	(in H ₂ O)	0.60/0.80	0.48/0.48	0.24/0.24	0.60/0.80	0.48/0.48	0.24/0.24
Temperature recovery efficiency (%)		69/69	70/69	75/73	—	—	—
Enthalpy recovery efficiency (%)	Heating	62/62	63/62	69/66	—	—	—
	Cooling	44/44	47/44	53/50	—	—	—
Sound pressure level (dB)	(Measured at 1.5m under the center of the unit)	37/39	35/37	28/30	38/40	36/39	29/31
Weight (lbs)		159					
Starting current		Under (5.0A) or less					

Model		LGH-F1200RX3-E					
Power source		Single phase 208-230V/60Hz					
Ventilation mode		Lossnay ventilation			Bypass ventilation		
Speed		Extra high	High	Low	Extra high	High	Low
Current (A)		5.7/5.7	5.1/5.6	3.3/3.6	5.6/5.6	5.0/5.5	3.3/3.6
Input (W)		1200/1290	1058/1200	682/810	1173/1265	1040/1196	676/800
Air volume	(CFM)	1200/1200	1012/1200	695/800	1200/1200	1012/1200	695/800
External static pressure	(in H ₂ O)	0.43/0.75	0.43/0.43	0.20/0.20	0.43/0.75	0.43/0.43	0.20/0.20
Temperature recovery efficiency (%)		69/69	70/69	76/74	—	—	—
Enthalpy recovery efficiency (%)	Heating	62/62	63/62	69/67	—	—	—
	Cooling	44/44	47/44	53/51	—	—	—
Sound pressure level (dB)	(Measured at 1.5m under the center of the unit)	39/41	37/39	30/32	40/42	38/40	31/33
Weight (lbs)		395					
Starting current		Under (9.5A) or less					

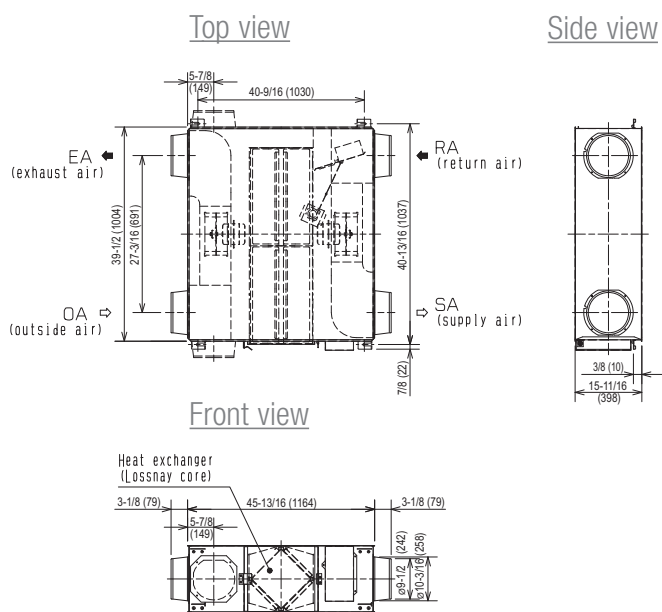
M-NET system with CITY MULTI
Flexible system,
for your multi demand



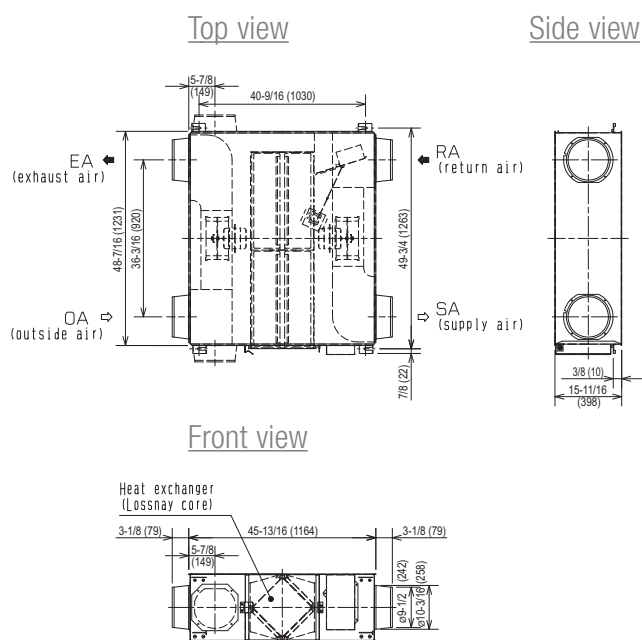
LGH-F300RX₃-E



LGH-F470RX₃-E



LGH-F600RX₃-E



LGH-F1200RX₃-E

