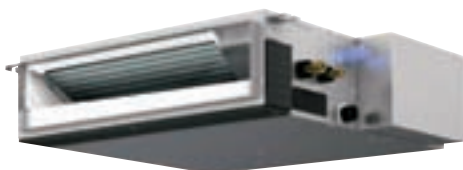


Mr. SLIM™

PEA(D)-SERIES Ceiling-Concealed

HEAT PUMP

- Variable Compressor Speed Inverter Technology
- Ozone-Friendly R-410A Refrigerant
- Significant Energy Savings up to 30%
- Super-Quiet Technology Only 23dB(A)
- Extra-Low Static Pressure of Only 0.02 in.WG
- Easy Maintenance with Self-Diagnostic Feature
- 3 Fan Speed Settings to Deliver Precise Comfort
- Hot Start System to Provide Warmth in the Beginning
- External Heater Interlock Function
- Auto-Restart after Power Failure
- Built-in High-Performance Drain Pump
- Extra-Long Pipe Length - up to 165 ft.
- Auto Change Over between Cooling & Heating
- Refrigerant Pre-Charged
- Ultra-Slim Body - less than 8" High
- Weekly Timer - up to 8 Patterns Each Day
- 2-Year Parts Warranty
- 7-Year Compressor Warranty



Indoor unit



Slim Smart Remote



Outdoor unit
PUA-A18NHA3



Outdoor unit
PUA-A24/30/36NHA3



Outdoor unit
PUA-A42NHA3

Indoor Unit Model			PEA-A18AA	PEAD-A24AA	PEAD-A30AA	PEAD-A36AA	PEAD-A42AA	
Outdoor Unit Model			PUZ-A18NHA3	PUZ-A24NHA3	PUZ-A30NHA3	PUZ-A36NHA3	PUZ-A42NHA3	
Capacity (Min ~ Max)	Cooling	Btu/h	8,000 ~ 18,000	12,000 ~ 24,000	12,000 ~ 30,000	12,000 ~ 35,000	18,000 ~ 42,000	
	Heating	Btu/h	8,000 ~ 20,000	12,000 ~ 28,000	12,000 ~ 34,000	12,000 ~ 38,000	18,000 ~ 48,000	
Power Input	Cooling	W	2,150	2,400	3,850	4,850	5,350	
	Heating	W	1,540	2,250	2,990	3,290	3,820	
SEER	Cooling		14.3	16.0	15.5	15.0	13.8	
EER	Cooling		8.4	10.0	7.7	7.2	7.8	
HSPF	Heating		10.0	10.2	9.4	9.8	10.0	
Capacity Control	Variable Compressor Speed							
Refrigerant	R-410A							
Power Supply	V, Phase, Hz	208-230, 1, 60						
Indoor	Dimension (W x D x H)	inch	46 7/8 x 27 5/8 x 7 7/8	43 3/8 x 28 7/8 x 9 7/8		55 1/8 x 28 7/8 x 9 7/8		
		mm	1190 x 700 x 200	1100 x 732 x 250		1400 x 732 x 250		
	Weight	lbs (kg)	60 (27)	73 (33)	73 (33)	91 (41)	95 (43)	
	Airflow (Lo-Med-Hi)	CFM Dry	423-529-635	512-636-742	618-742-883	847-1024-1201	1042-1254-1483	
	Ext. Static Pressure	in. WG	0.02/0.06/0.14/0.20	0.14/0.20/0.28/0.40/0.60		0.14/0.20/0.28/0.40/0.60		
		Pa	5/15/35/50	35/50/70/100/150		35/50/70/100/150		
	Moisture Removal	Pints/h	3.26	6.9	8.6	7.9	9.0	
	Sound (Lo-Med-Hi)	dB(A)	30-34-38	30-33-37	30-34-39	33-38-42	36-40-44	
	Max. Fuse	A	15	15	15	15	15	
	Min. Ampacity	A	2	2.63	2.73	3.30	3.50	
	Field Drain Pipe Size	O.D. in. (mm)	1 1/4 (32)	1 1/4 (32)	1 1/4 (32)	1 1/4 (32)	1 1/4 (32)	
Outdoor	Dimension (W x D x H)	inch	31-1/2 x 13 x 23-5/8	37-3/8 x 13 x 37-1/8		37-3/8 x 13 x 53-1/8		
		mm	800 x 330 x 600	950 x 330 x 943		950 x 330 x 1350		
	Weight	lbs (kg)	99 (45)	165 (75)	165 (75)	165 (75)	260 (118)	
	Sound (Cool/Heat)	dB(A)	46/47	48/50	48/50	48/50	51/55	
	Max. Fuse	A	20	30	40	40	40	
	Min. Ampacity	A	13	18	25	25	26	
Pipe Size	Liq. x Gas in. (mm)	1/4 x 1/2 (6.35 x 12.7)		3/8 x 3/4 (9.52 x 15.88)				
Max. Height Difference	Ft. (m)	100 (30)		100 (30)	100 (30)	100 (30)	100 (30)	
Max. Pipe Length	Ft. (m)	100 (30)		165 (50)	165 (50)	165 (50)	165 (50)	



Changes for the Better

All test conditions are based on ARI 210/240.

Rating conditions: Cooling — Indoor: D.B. 26.7°C (80°F), W.B. 19.4°C (67°F); Outdoor: D.B. 35.0°C (95°F), W.B. 23.9°C (75°F)
 Heating — Indoor: D.B. 21.1°C (70°F), W.B. 15.6°C (60°F); Outdoor: D.B. 8.3°C (47°F), W.B. 6.1°C (43°F)